

XLX series solar inverters

autarco

The Autarco XLX series inverters offer the best and most reliable performance in its class. The inverter is a key element in a solar PV power plant and these inverters provide the reliable basis for Autarco's unique kWh guarantee.



Eligible for Autarco's insured kWh Guarantee



Compact, lightweight and silent



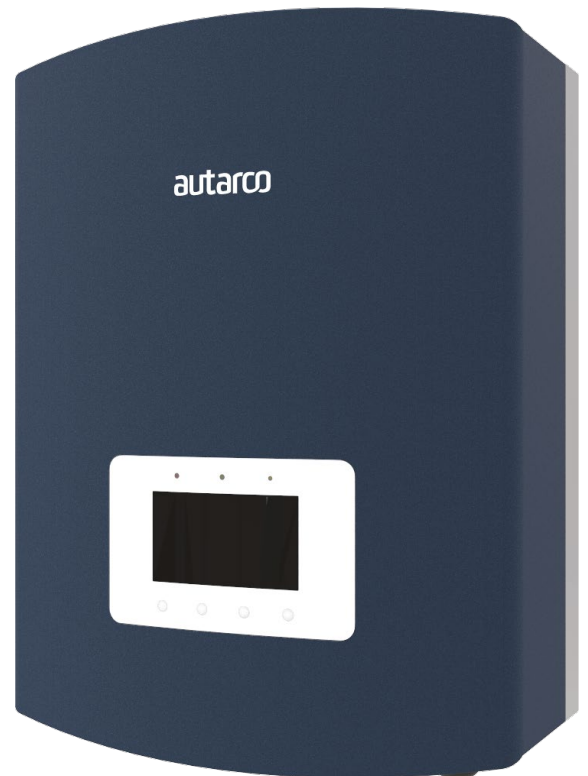
Four independent MPP trackers



Extremely wide MPPT voltage range



Waterproof IP65 enclosure



QUALITY CERTIFICATES

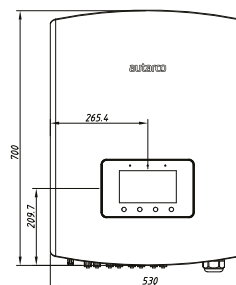
- EN 50438IE, VDE0126-1-1, G59/3, NB/T32004, AS4777, IEC61727 IEC62109-1-2, AS3100, EN61000-6-1, EN62109
- VDE4105, CE, Solarif



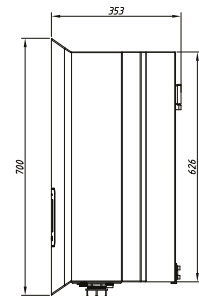
GENERAL CHARACTERISTICS

Dimensions (W x H x D)	530 x 700 x 356.5mm
Mounting	Wall bracket
Weight	58.2kg
Max. site altitude	4000m
IP protection class	IP65 according IEC 60529
Isolation type	Transformerless
Cooling principle	Convection
Noise level, typical	< 30dBA
LED indicators	3
LCD display	7" full color
Communication interfaces	1xRS485, 2xRJ45
Optional interfaces	WiFi, GPRS, Z-Wave, LAN
DC switch	Integrated (optionally excluded)

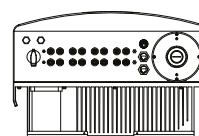
Front



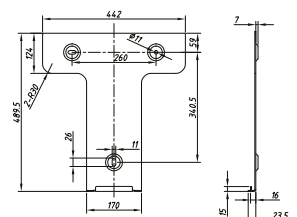
Side



Bottom



Bracket



INPUT CHARACTERISTICS

	S2.XLX20000(S)	S2.XLX25000(S)	S2.XLX30000(S)
Max. PV input power (W)	23000	28000	34000
Max. DC voltage (V)	1000	1000	1000
MPP tracker voltage range (V)	200-800	200-800	200-800
Start-up DC voltage (V)	350	350	350
Number of MPP trackers	4	4	4
Max. DC current per MPPT (A)	18	18	18
Number of DC connections per MPPT	2	2	2
DC connection type	MC4	MC4	MC4
Turn on power (W)	10	10	10

OUTPUT CHARACTERISTICS

AC connection	380 / 400 VAC	380 / 400 VAC	380 / 400 VAC
Power connection	3-phase	3-phase	3-phase
Rated AC power (W)	20000	25000	30000
Max. AC power (W)	22000	27500	33000
Grid voltage range (V)	According to VDE 0126-1-1, G59/3, AS4777, NB/T32004		
Grid frequency range (Hz)	According to VDE 0126-1-1, G59/3, AS4777, NB/T32004		
Rated AC current (A)	28.7	36.1	43.3
Max. AC current (A)	33.3	41.7	50.0
Power factor	0.8 ... 1 ... 0.8	0.8 ... 1 ... 0.8	0.8 ... 1 ... 0.8
Harmonic distortion (%)	< 3	< 3	< 3
Cooling principle	Convection	Convection	Convection
DC injection current (mA)	< 50	< 50	< 50
Weight (kg)	57.2	58.2	58.2

EFFICIENCY

Max. efficiency	98.60%
Euro efficiency	98.30%
MPPT efficiency	99.90%

PROTECTION

DC overvoltage protection	Integrated
DC reverse polarity protection	Integrated
Short circuit protection	Integrated
Grid monitoring	Integrated
Residual current detection	Integrated
Insulation resistance monitoring	Integrated
Temperature protection	Integrated
Islanding protection	Integrated
Arc-fault circuit interrupter	Optional

OTHER CHARACTERISTICS

Operating temperature range	-25°C to +60°C
Relative humidity range	0% to 100%

The specifications contained in this datasheet may deviate slightly from our actual products due to on-going product improvement and are subject to change at any time without prior notice.

